



New!! TP12KSC-DX

**Heavy Duty Two Post Lift
12,000 lbs. Capacity**



The New iDEAL TP12KSC-DX 12,000 lb. ALI Certified Heavy Duty Two Post Lift is a premium symmetric design clear floor vehicle lift with the latest design features, now including low profile swing arms, adjustable swivel pads & single point cable lock release. The symmetric arm configuration provides stable lifting, making it perfect for super duty & light duty trucks along with most passenger cars. The direct 'push' drive cylinders, hose & door guards and automatic arm restraints complete the package for a premium, high quality lift, all at a great value!

Features

- 12,000 LBS CAPACITY
- **NEW** LOW PROFILE SWING ARM DESIGN
- **NEW** ADJUSTABLE HEIGHT SWIVEL PADS
- **NEW** 2.6" & 5" STACKABLE HEIGHT ADAPTORS
- **NEW** SINGLE POINT 'CABLE' LOCK RELEASE
- **NEW** MET UL/CSA CERTIFIED DURO POWER UNIT
- SYMMETRIC LIFT ARMS
- AUTOMATIC ARM RESTRAINTS
- DIRECT 'PUSH' DRIVE CYLINDERS
- EXTERNAL HOSE GUARDS
- RUBBER DOOR GUARDS
- DURABLE POWDER-COAT FINISH
- ALI CERTIFIED
- LIMITED WARRANTY POLICY -
(5 YR STRUCTURAL / 1 YR PARTS)

Specifications

Lift Model	TP12KSC-DX
Capacity	12,000 lbs
Height Overall	168-1/2"
Width Overall w/ Power Unit	151-5/16"
Max Lift Height	75"
Width Between Columns	122"
Min. Pad Height	4-7/8"
Drive Thru Clearance	109"
Lifting Speed	50S
Asymmetric / Symmetric	Symmetric
Clear Floor / Floor Plate	Clear Floor
Short Arm Reach - min/max	37-5/8" - 57"
Long Arm Reach - min/max	Same
Narrow Bay Setting	NA
Max Load Per Arm	3,000 lbs
Ceiling Height Required	170"
Ship Weight	2,295 lbs
Power	220V - 20 AMP - 1 PH



Optional Accessory



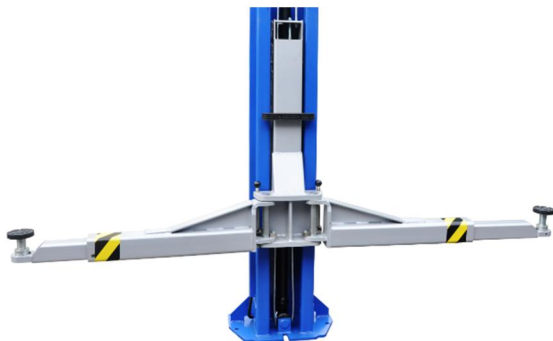
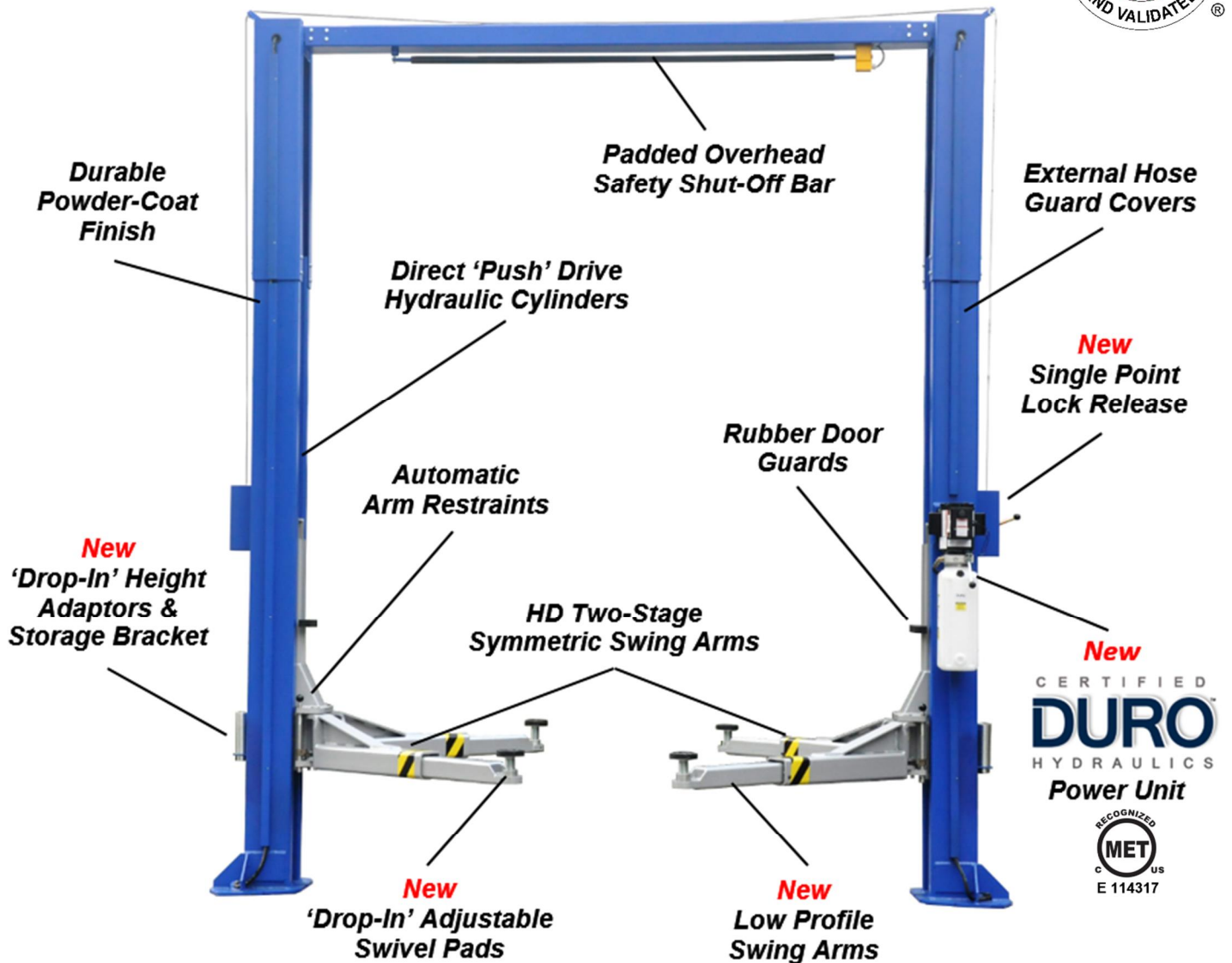
**SPIN-UP CRADLE ADAPTORS
(Set of 4ea)
(P/N TP12SDX-SPNCA)**



Premium Products at Affordable Prices!!

TP12KSC-DX

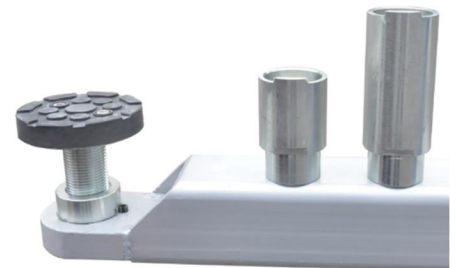
New Features, More Value!!



HD Symmetric Swing Arms with 'Automatic' Arm Restraints



Single Point 'Cable' Lock Release



2-3/16" Adjustable Height Swivel Pads with 2.6" & 5" Height Adaptors