

UNIVERSAL MARKSMAN BENCH™

ASSEMBLY INSTRUCTIONS

Thank you for the purchase of your aluminum marksman bench. Please review the hardware and required frame components list prior to installation.



AMERICAN ALUMINUM SEATING INC.
MARSHALLTOWN, IOWA
WWW.BLEACHERSEATING.COM

All required parts for assembly are included with your purchase. This product is capable of withstanding year round elements. To clean the aluminum, use a mild & non-abrasive soap, soft brush or sponge and rinse. It is recommended to check the tightness of all hardware annually.





TABLE FRAME & PLANK PARTS

(SEE DETAIL VIEW AT RIGHT)

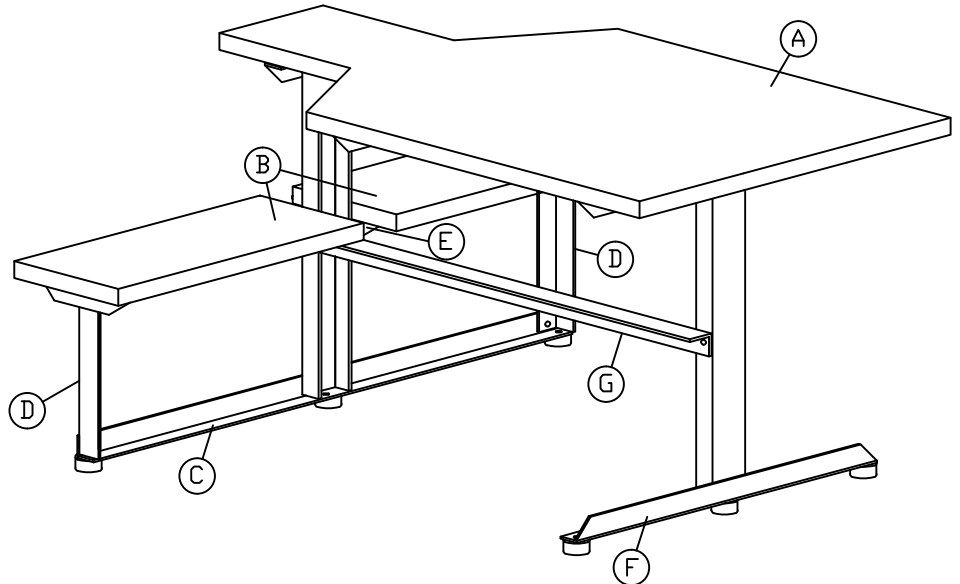
A	(1) ASSEMBLED TABLE TOP
B	(2) ASSEMBLED SEATS
C	(1) REAR FRAME - 44" BASE
D	(2) BOLT ON LEGS W/ANGLE
E	(1) SEAT ANGLE - 8 1/2"
F	(1) FRONT FRAME - 27 1/2" BASE
G	(1) HORZ. BRACE - 41 1/8"

INCLUDED HARDWARE

16	BOLT CLIP	
22	5/16" X 1 1/4" BOLT 5/16" FLANGE NUT	
5	3/8" X 1" BOLT 3/8" FLANGE NUT	
6	RUBBER FOOT PADS	
6	3/8" WASHERS	

REQUIRED TOOLS (NOT INCLUDED)

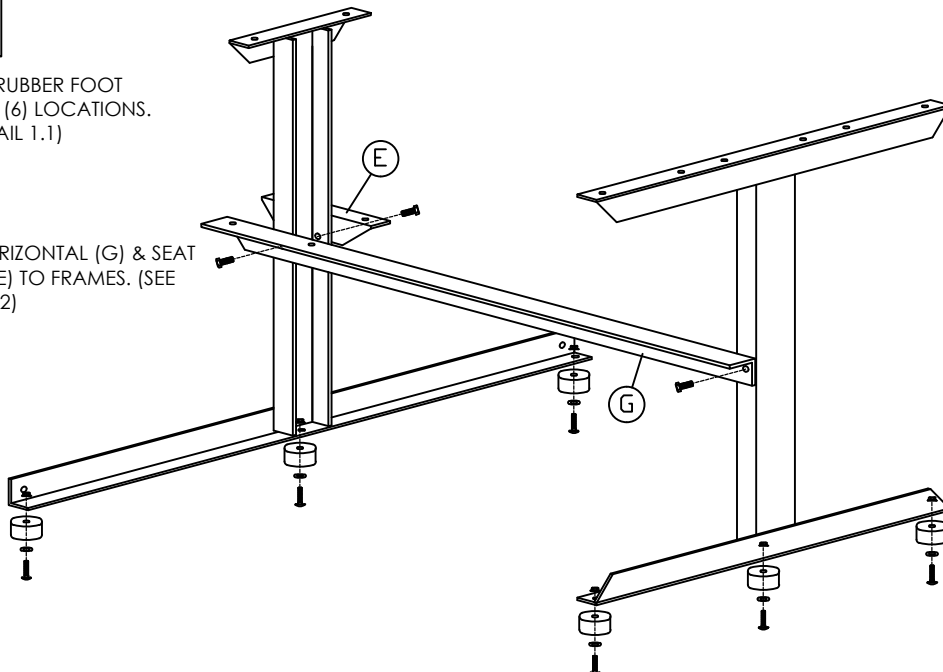
- TAPE MEASURE
- HAND RATCHET
- 1/2" SOCKET
- 3/8" SOCKET



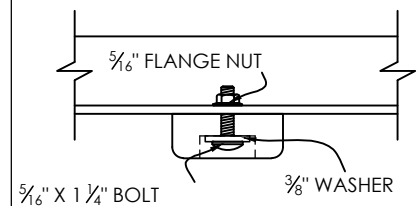
1 ATTACH RUBBER FOOT PADS, HORIZONTAL BRACE, & SEAT ANGLE

INSTALL RUBBER FOOT PADS AT (6) LOCATIONS. (SEE DETAIL 1.1)

BOLT HORIZONTAL (G) & SEAT ANGLE (E) TO FRAMES. (SEE DETAIL 1.2)



1.1 PAD ATTACHMENT DETAIL



NOTE: DO NOT OVERTIGHTEN.

1.2 ANGLE ATTACHMENT DETAILS

