

# P410

## Four Post Storage Lift



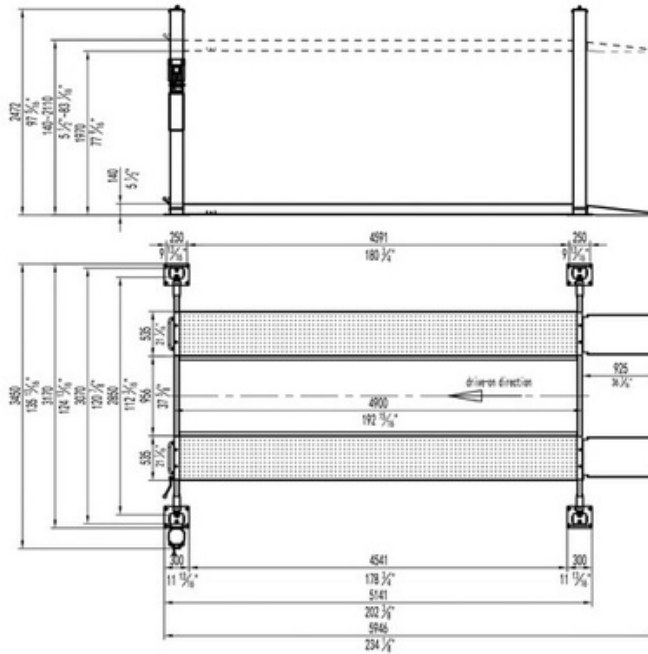
[WWW.STRATUSAUTOEQUIP.COM](http://WWW.STRATUSAUTOEQUIP.COM)

**STRATUS**  
auto equipment<sup>®</sup>

512-640-9896  
[sales@stratusautoequip.com](mailto:sales@stratusautoequip.com)

# TECHNICAL

- Lifting Capacity: 10,000 LBS
- Overall Height: 97 5/16"
- Max Lifting Height: 77 9/16"
- Min Lifting Height: 5 1/2"
- Inside Column Width: 112 3/16"
- Runway Length: 192 15/16"
- Runway Width: 21 1/16"
- Lifting Time: About 90 SEC
- Lowering Time: About 40 SEC
- Motor Power: 3 HP
- Motor Voltage: 220 V  
(Recommend 20A breaker)
- Rated Frequency: 60 HZ
- Phase: 1 PH
- Column Thickness of Steel: 3/16"  
(4MM)
- Runway Thickness of Steel: 1/4"  
(6MM)
- Cable Diameter: 7/16" (11MM)
- Hydraulic Oil (Recommend AW46  
or AW32): 1.6 GAL (6L)



# FEATURES

- Manual safety lock release
- Included 1 jack tray, 8 drip trays
- Mechanic locks automatically engaged to lock position in ascending processing
- Imbalance protection, safe and reliable
- Self-lubricating pulleys and pre-tensioned cable
- Proofed by dynamic test with 115% of rated capacity and static test with 150% rated capacity
- Powder coating finish: Granite Gray (RAL 7026) + Reinorange (RAL 2004)

## Warranty

**5 YEAR LIFTING STRUCTURE**

**3 YEAR HYDRAULIC**

**2 YEAR ELECTRIC**

